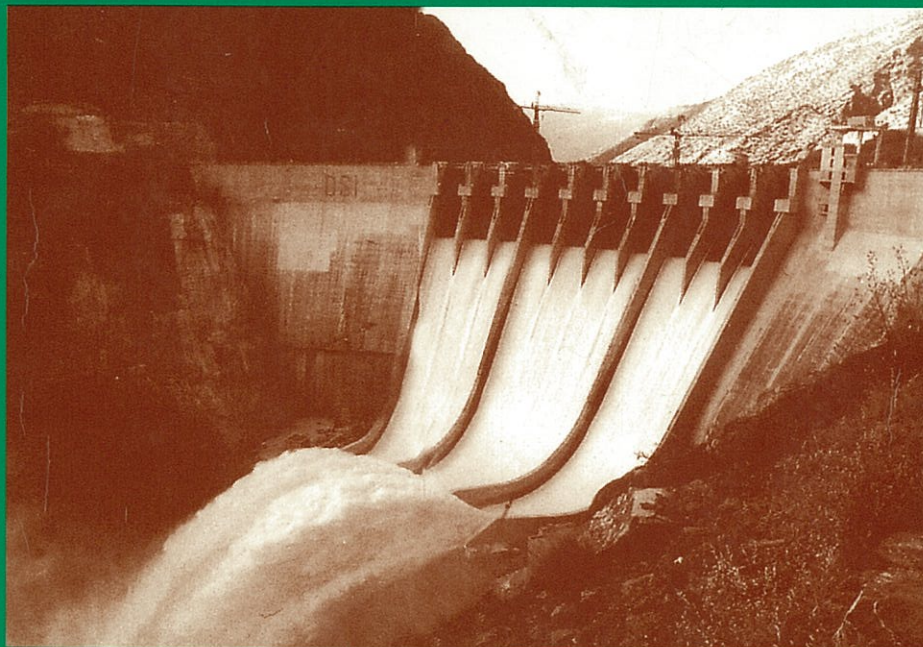


# DAM HYDRAULICS

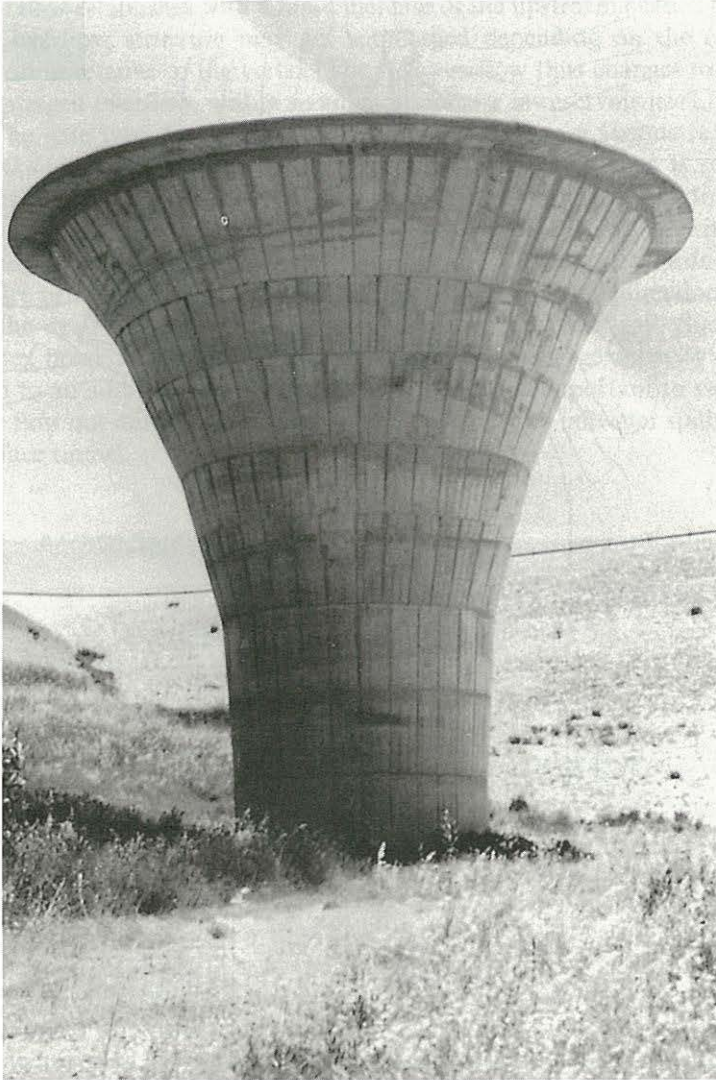


D. L. VISCHER  
W. H. HAGER



**WILEY**  
*Publishers Since 1807*

WILEY SERIES IN  
WATER RESOURCES  
ENGINEERING



**Figure 2.42**  
Morning glory  
spillway of Genzano  
dam (Italy). view on  
single intake (Salini  
Costruttori S.p.A.  
Italy)

on the overfall crest. Figure 2.42 relates to a typical Morning glory overflow.

### 2.4.2 Crest shape

The shape of the Morning Glory overfall is a logical extension of the standard overfall crest. In order to control the crest pressures, sharp-crested circular weirs were tested and both the discharge characteristics and the lower crest geometry were experimentally determined. A basic study was conducted by Wagner (1956) as an extension of the 1948